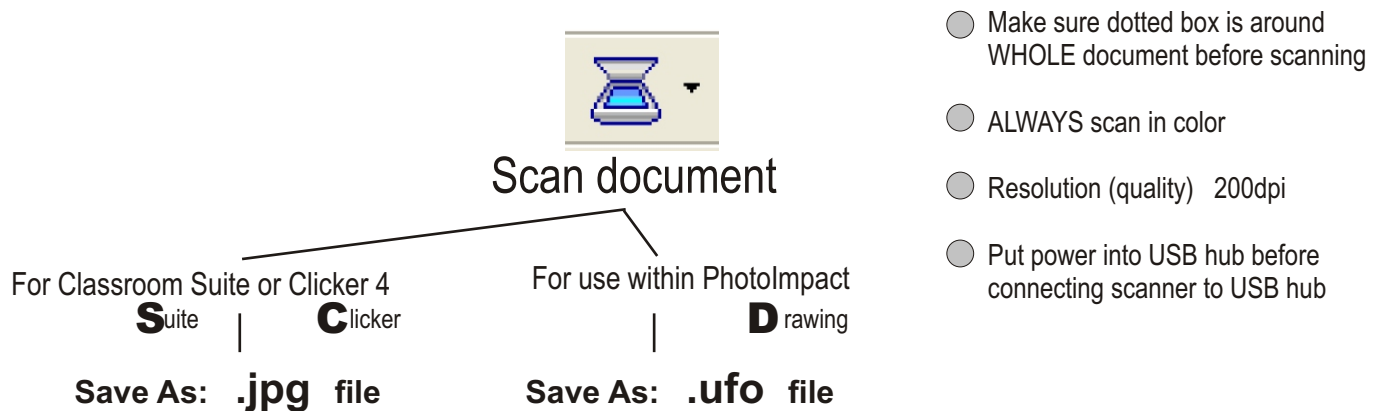


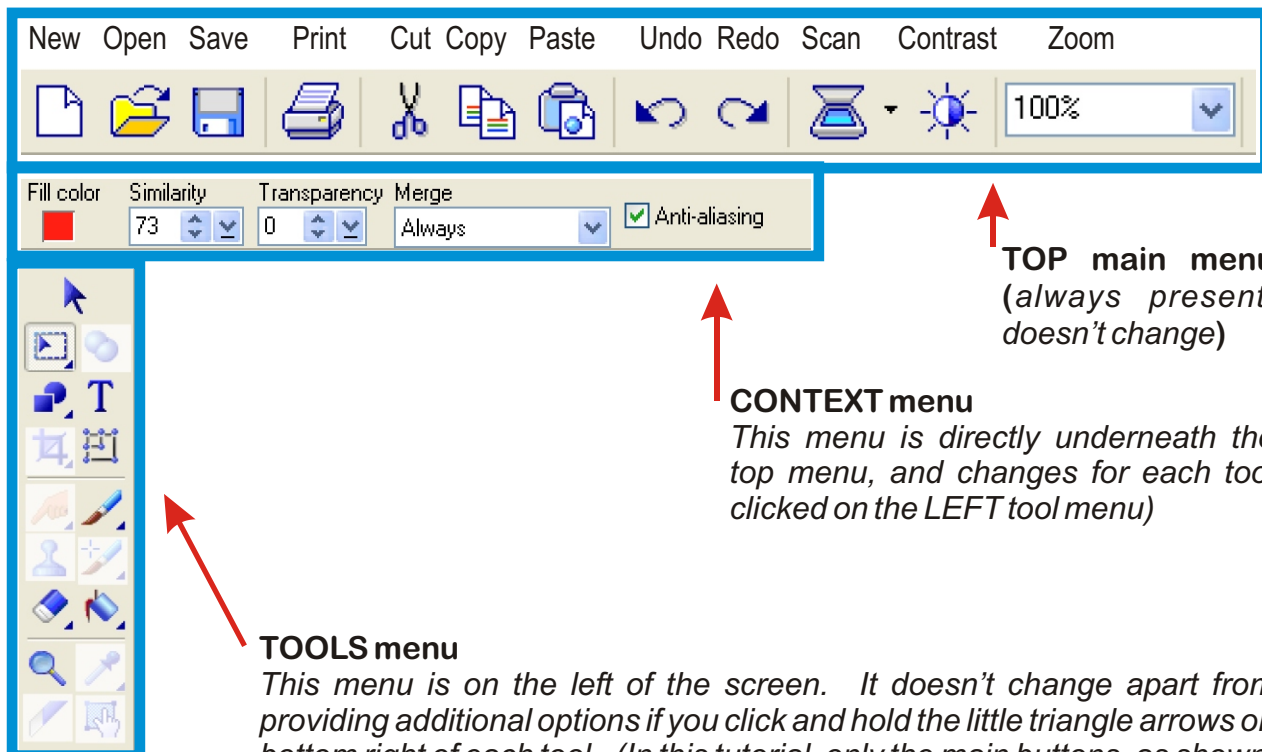
Use of drawing / paint programs for curriculum modification INSTRUCTIONS:

Ulead PhotoImpact (PI) is a powerful program which takes a little while to get used to, but which offers much potential for various kinds of QUICK curriculum modification. Students can use the exact worksheet that others are using, and in many cases, worksheets can be very quickly modified. This is an instruction sheet showing the specific tools and features which can be used. In learning how this program works, ignore many of the buttons and commands available. Focus on the tools presented in this instruction sheet to become familiar with some of the most basic functions for scanning and modifying worksheets. As you become more familiar with the program, you will gradually learn about its other features.



PhotoImpact screen:

To set up simple menu bar at top: go to View - Toolbars and Panels - Options. click on 'large buttons'. Then go to 'Customize'. Select the buttons shown here below).



TOP main menu
(always present, doesn't change)

CONTEXT menu
This menu is directly underneath the top menu, and changes for each tool clicked on the LEFT tool menu)

TOOLS menu
This menu is on the left of the screen. It doesn't change apart from providing additional options if you click and hold the little triangle arrows on bottom right of each tool. (In this tutorial, only the main buttons, as shown, are used. Tools grayed out are disregarded for this basic tutorial.)